



STALLWORKS

EQUINE STALL & DOOR SYSTEMS

2023 Product Catalog



Celebrating 21 years of service

TABLE OF CONTENTS

Dutch Doors.....	3
Bale Doors.....	6
Barn Doors.....	9
Stall Systems.....	13
Aisle Entry Doors.....	17
Perimeter Colors.....	19
Liner Colors.....	20
Life of an Order.....	21
FAQ.....	22

NOTE: Our door systems are not engineered to come in direct contact with livestock.



The StallWorks Difference

Whether you're a contractor building a large equine facility or working towards making your backyard dream come true, our products have the quality and style to make your project beautiful. We offer a variety of styles such as bale, dutch, aisle entry, loft and barn doors in order to give your barn the exact look you are seeking.

All of our doors and stalls are manufactured with quality galvanized metal due to its superiority in rust and corrosion prevention, ensuring a long-lasting product. We also powder coat your products, giving them a durable layer of paint protection that will last for years to come. Our wide range of powder coating colors and textures allows us to match almost any existing barn or paint color.

Our History

In 2000, our founder began to build horse barns and quickly realized the need for quality-built equine products in the Virginia Heartland. So in 2001, StallWorks was founded and the dutch door and stall systems were developed. Our service area quickly grew to include dealers across Virginia, Delaware, Maryland and Pennsylvania. Then in 2008, we set up shop in a 10,000 square foot warehouse in Appomattox, Virginia.

We continued to grow and found ourselves needing to relocate once again to a larger facility. In 2015, we relocated to a newly remodeled 28,000 square foot facility just ten minutes down the road. Then in 2017, we expanded our footprint to 32,000 square feet.

What started out as a 3 man team has now grown into two divisions: StallWorks, LLC and Virginia MetalFab. We now provide job security and benefits to more than 65 employees and their families, and will be moving and expanding once again in the fall of 2022! Since the beginning, we have looked for ways to grow and improve our product. Today, we are proud to serve our customers, regardless of if they are homeowners, contractors, or our nationwide distributors. We look forward to many more years of growth and projects to come.



Dutch Door

DUTCH DOOR

Our dutch doors are built to last. If you want to add a new level of accessibility for both yourself and your livestock, installing dutch doors is your answer. Like bale doors, they provide ventilation and windowing abilities. They also provide direct access to the contents of your barn without having to use a main barn door. You can lead your horses or cattle out from their stalls or keep them inside with the window portion open or closed. Made of durable materials of the highest quality, our dutch doors offer protection against the elements for all of the assets within.

Typically used as exterior doors to allow your horse to remain in the stall while still being able to look out.



SPECIFICATIONS

18GA galvanized steel, panel perimeter and crossbucks

14GA galvanized steel jamb

Heavy duty 8" T-Hinges, D-Handle and Barrel Bolt

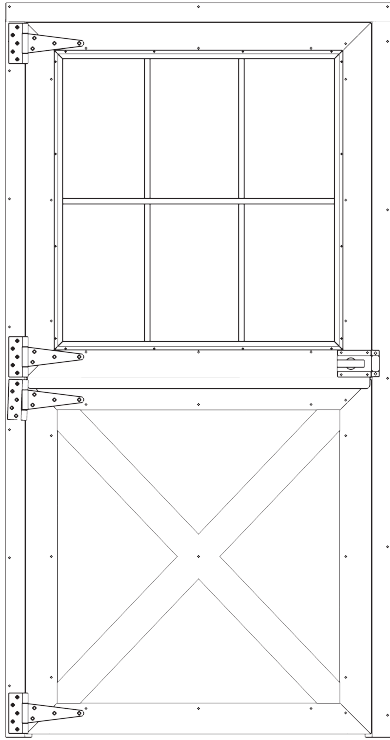
5/8" quality plywood core

3/16" double pane tempered glass with internal grid

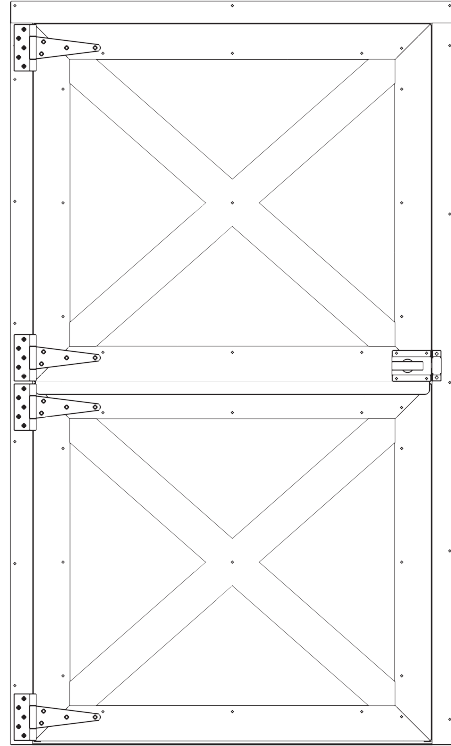


HOW TO ORDER

We have several sizes and styles for our Dutch Doors. When ordering a Dutch Door, we need to know what size you are looking for, colors, and glass or no glass. All dutch doors are two colors, the perimeter and the liners. The liner is the color that you see behind the x and the perimeter/crossbucks are everything else.



GLASS



NO GLASS

Best Sellers

4' X 7'

4' X 8'

Please contact us for any specific custom door sizes you may need.

**Starting at
\$1,354**



Bale Door



If you want to add wall or stall openings to your barn without committing to the size and function of a dutch door, bale doors are a simple yet elegant option. These window-style doors open smoothly and offer quality ventilation. When closed, they provide superb protection against outdoor weather and temperature changes so the contents of your barn will not be disturbed.



SPECIFICATIONS

18GA galvanized steel, panel perimeter and crossbucks

14GA galvanized steel jamb

Heavy duty 8" T-Hinges, D-Handle and Barrel Bolt

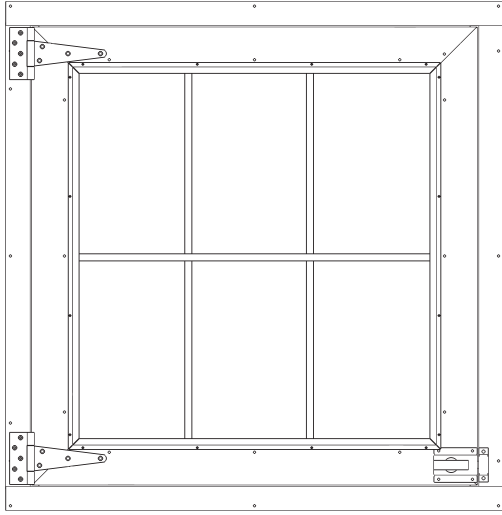
5/8" quality plywood core

3/16" double pane tempered glass with internal grid

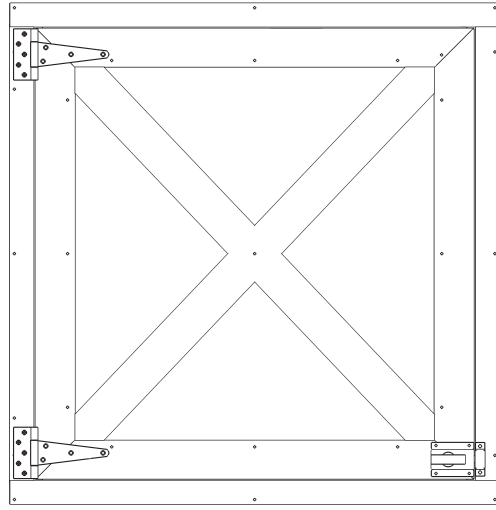


HOW TO ORDER

We have several sizes and styles for our Bale Doors. When ordering a Bale Door, we need to know what size you are looking for, colors, and glass or no glass. Bale Doors with glass will only need the perimeter color, while the bale doors without glass have the perimeter and the liners. The liner is the color that you see behind the x and the perimeter is everything else.



GLASS



NO GLASS

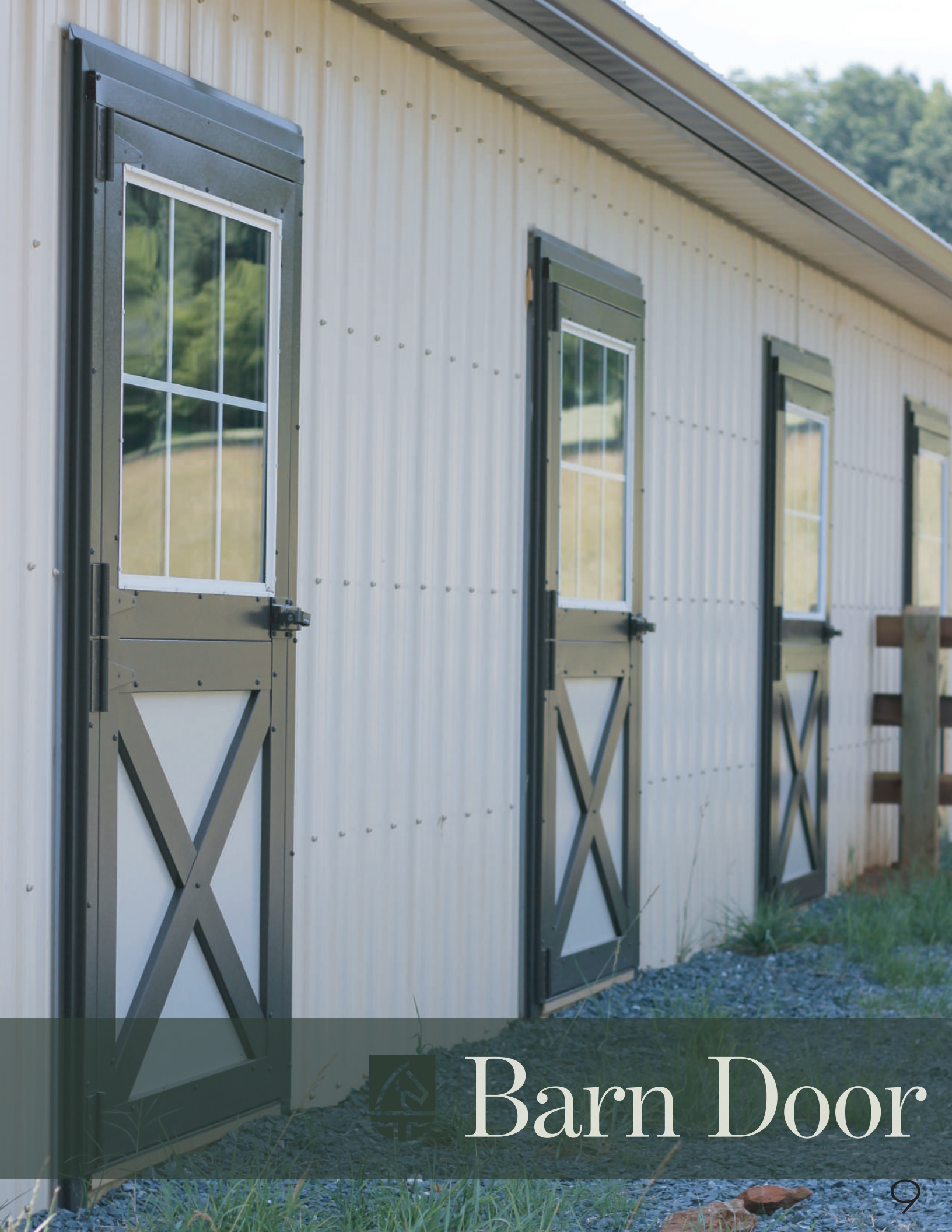
Best Sellers

4' X 3/6'

4' X 4'

Please contact us for any specific custom door sizes you may need.

**Starting at
\$714**



Barn Door

BARN DOOR

Our barn doors are some of the most flexible, versatile options we have available. They offer the look of a dutch door while offering the functionality of an individual door. They can be solid or include windows. These doors are excellent for both interior and exterior applications, from tack and feed rooms to outside doorways. They also provide a more weather-resistant finish than dutch doors and can withstand a lot of tough use. Additionally, they are flexible in design. If you want a more classic look with a hinged opening, we can make that for you. If you want ease of access and a stylish modern feel, we can provide you with a slide opening and wear-resistant tracks.

So what is the difference between a Dutch Door and a Barn Door? A Barn Door operates as one solid door, just like any other household door. Panels on a Dutch Door move independently.

SPECIFICATIONS

18GA galvanized steel, panel perimeter and crossbucks

14GA galvanized steel jamb

Heavy duty 8" T-Hinges, D-Handle and Barrel Bolt

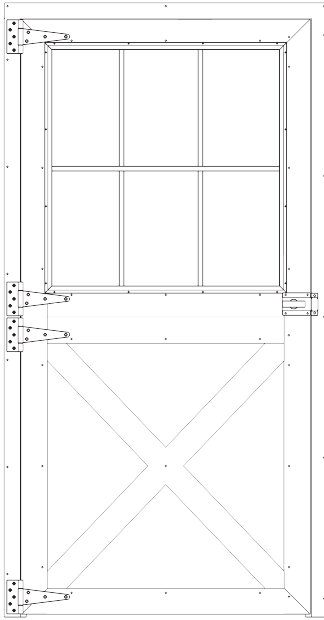
5/8" quality plywood core

3/16" double pane tempered glass with internal grid

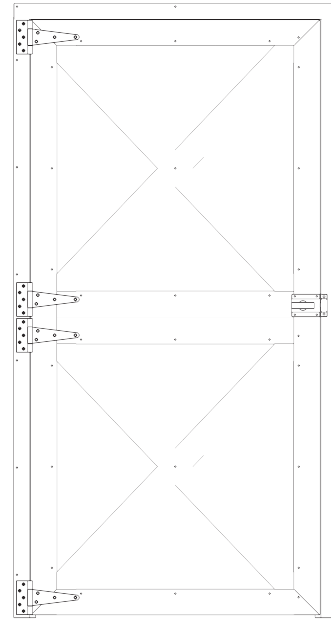


HOW TO ORDER

We have several sizes and styles for our Barn Doors. When ordering a Barn Door, we need to know what size you are looking for, colors, and glass or no glass.



GLASS



NO GLASS

Best Sellers

4' X 7'

8' x 7'

Please contact us for any specific custom door sizes you may need.

**Starting at
\$1,447**

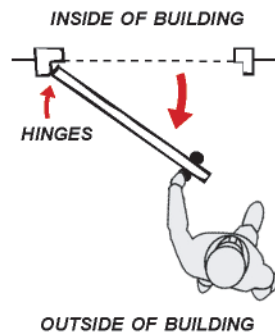
Door Orientation

When ordering any hinged doors from Stallworks, we need to know which way you would like your new doors to swing. There are two options, inswing or outswing. Please use the guide below to determine what door orientation best fits your needs. (Note that inswing doors will be an additional charge)

TO DETERMINE **OUTSWING** - Face door from outside building

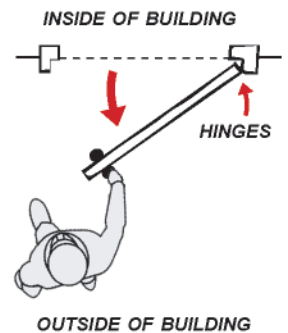
LEFT HAND OUTSWING

- Hinges are on LEFT
- Door opens toward you



RIGHT HAND OUTSWING

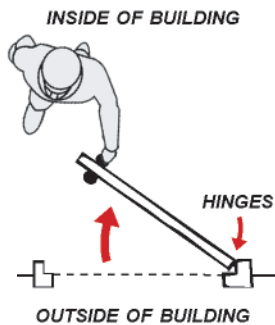
- Hinges are on RIGHT
- Door opens toward you



TO DETERMINE **INSWING** - Face door from inside building

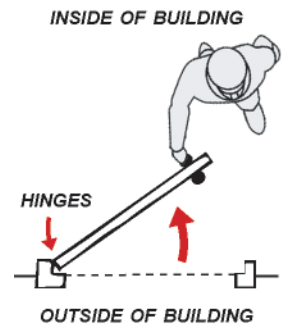
LEFT HAND INSWING

- Hinges are on LEFT
- Door opens toward you



RIGHT HAND INSWING

- Hinges are on RIGHT
- Door opens toward you





Stall Systems



STALL SYSTEMS

Our long-lasting stall systems are perfect for any barn. We offer a wide variety of options so you can order the stall equipment that works best for your needs. Our stalls are durable, stylish, and resistant to all kinds of wear, rust, and fading. They are made of the highest quality 14GA galvanized steel, 3-4 inch grills, heavy duty delrin trolleys and reliable doorstops. As a result, they provide ample protection for and easy access to your horses and other livestock.



SPECIFICATIONS

14GA galvanized steel

Heavy duty delrin trolleys

Included- screws, lags, heavy duty trolleys, trolley bracket, and door stops

Lumber not included.

HOW TO ORDER

To start the process of picking out your next stall system, we want to walk you through the options you have available to you. There are many combinations, and we will showcase a few here. Our stall fronts are a combination of a stall door and a stall grill. Normally a barn will be built to the rough openings of our stall fronts but we understand if that's not a possibility, we are able to custom make our stall fronts to fit any size openings.

***Please note that lumber is not included with our stall fronts.**

*Also note that stall doors and grills can be sold individually. Contact us for pricing.

**Starting at
\$818**



Standard 12' x 7' stall front kit.

**12' x 7' stall front kit with
fold down stall door.**

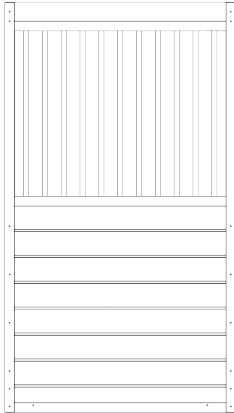


**12' x 7' stall front kit with v-neck
stall door and feed opening stall
grill.**

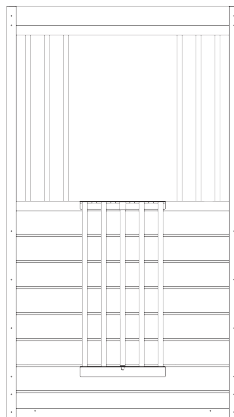
Mix and Match

Choose any combination of stall door and stall grill that best suits your needs, give us a call/email for a quote, and then once you are 100% satisfied, we go to work making your stall front.

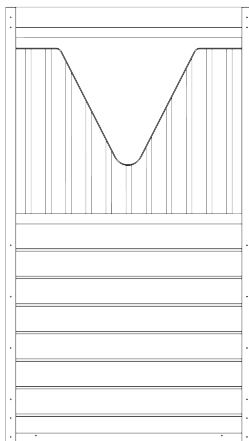
Stall Doors



STANDARD

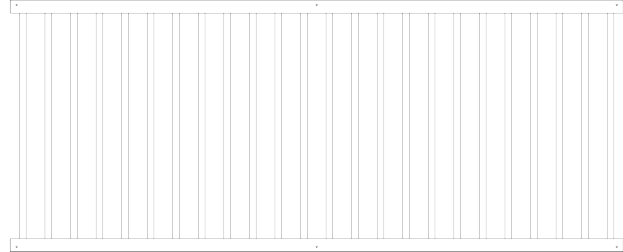


FOLD DOWN

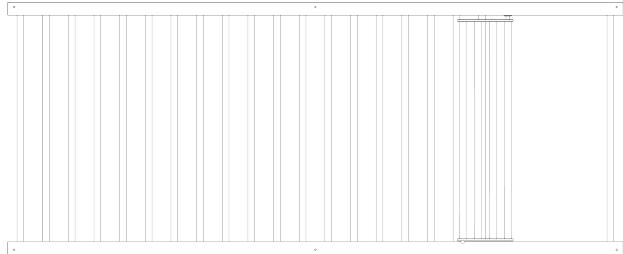


V-NECK

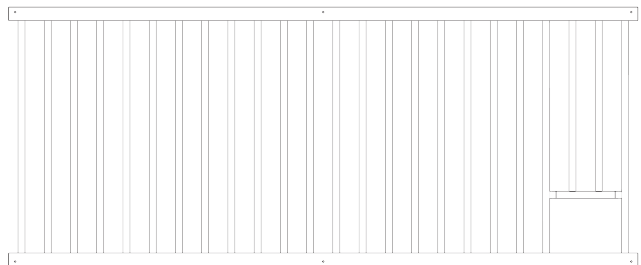
Stall Grills



Standard 8' grill. 36" high



8' grill with swing out door. 36" high



8' grill with feed opening. 36" high



Aisle Entry Doors



AISLE ENTRY DOOR

Our aisle entry doors will not only be functional for years to come, they will also make a statement out of the front of your barn. These aren't your average sliding doors. These doors have a plywood core and are made with 16GA galvanized steel, a 5" steel perimeter and crossbucks. They open and close smoothly along heavy-duty delrin trolleys, and can be customized to fit any rough opening you have. All Aisle Entry Doors come standard with 3/16" double pane tempered glass windows with internal grids. These doors won't twist or rot over time, so you won't have to keep repairing or replacing them. They are built for decades of hard use and for assisting you in raising generations of livestock and horses. They are also big enough to allow plenty of room for moving animals or materials in and out. When you put up these aisle entry doors, you're looking at the long haul and the bigger picture of your barn.



SPECIFICATIONS

16GA galvanized steel, 5" steel perimeter and crossbucks

Heavy duty delrin trolleys

3/4" plywood core

29GA skin

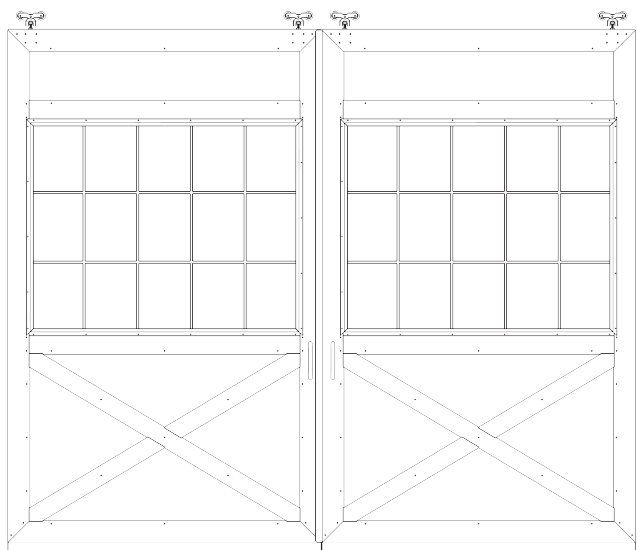
Sliders comes with: door stops, stay rollers, inside/outside door pulls, 7" jamb latch. Split sliders also come with cane bolt and splice collar

3/16" double pane tempered glass with internal grids

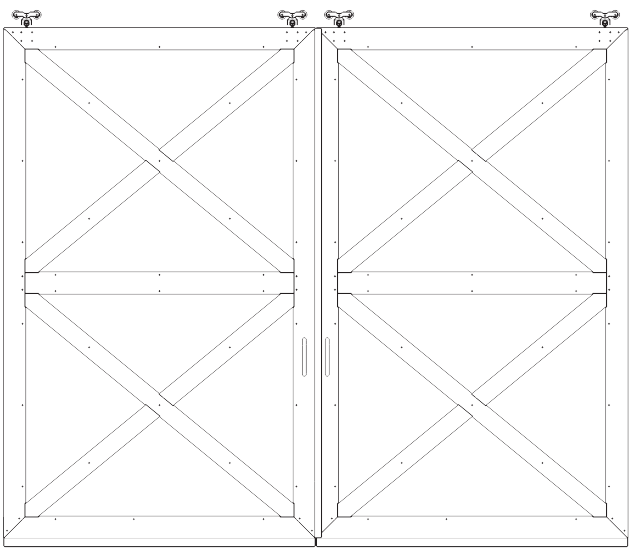
Track package sold separately

HOW TO ORDER

We have a list of sizes making it easy to find the right Aisle Entry Doors for you. When picking out your Aisle Entry Doors you need to know a couple of things to get started. What is your rough opening going to be? What colors do you want? Our doors are divided into two main colors. The window frame is white as a standard but you get to choose the perimeter and liner colors! The liner color is what you see behind the X. The space at the top is only applicable if your door is 10' H or taller.



GLASS



NO GLASS

Aisle Entry Door Sizes

When ordering your door size, start with the width first and then the height. Pick and choose from the list below to find the size that works best for you. For example, you could choose an 8'x12' or 14'x10'. Sizes are overall dimensions so the width column divided by two will tell you how wide each panel will be on your doors. For example a 12' wide set of doors will have 6' wide panels.

Width	Height
8'	8'
9'	9'
10'	10'
12'	12'
14'	14'

Best Sellers

12' X 10' with glass - \$4,040

10' X 10' with glass - \$3,729

Contact us for
further pricing

These are the color options you have to choose from for the perimeter of your doors.

PERIMETER COLORS

Actual colors may vary. As part of the order confirmation process, we send out steel color samples powder coated with the colors you have chosen.

Hammer Black
T008-BK181

Hammer White
T013-WHO9

Hammer Charcoal
9113-71228

Hammer Green
9313-60805

Hammer Brick Red
9213-80394

Hammer Maroon
9513-3933

Hammer Brown
9313-80447

Hammer Burnished Slate
9213-80465

Hammer Royal Blue
9213-50484

Hammer Light Stone
River Tex
PCTA29173

Hammer Taupe
9113-11896

Hammer Tan
9213-80449

LINER COLORS

Clay

Burgundy

Black

Charcoal

Brown

Light Brown

Antique Bronze

Tan

Copper Metallic
*metallic finish

These are the options
for the colors behind
the crossbucks.

Actual colors may
vary. As part of the
order confirmation
process, we send out
steel color samples
with the colors you
have chosen.

Bright White

Bone White

Light Stone

Ivory

Dark Green

Ivy Green

Hunter Green

Light Gray

Bright Red

Brick Red

Hawaiian Blue

Gallery Blue

The Life of an Order

What you can expect from us

STEP 1

We send you a quote and once it is approved, we put together a sales order and take payment for 50% of the order.

STEP 2

We will then send you a packet with drawings, verification forms to approve, and color swatches.

STEP 3

Once you receive this packet, and send back the approved documents, we get to work on your order!

STEP 4

We work hard at fabricating your order in our state of the art facility.

STEP 5

Before every order is shipped, we look over everything to make sure it meets our StallWorks standards.

STEP 6

We will communicate to you when your order is ready to either ship or be picked up so you know when to expect the order. Final payment will also be arranged at this time.

STEP 7

It's finally time to receive your order and install!

STEP 8

We are here to help with any questions you may have in this process.

STEP 9

Now, barn is done and enjoyed by all!

STEP 10

One of the best parts of this job is seeing your beautiful completed projects, we would love for you to send us some pictures!

FAQ

Q: Do the aisle and dutch doors come with wood installed?

A: All of StallWorks doors have a plywood core with a laminated metal liner that ensures durability.

Q: Do you offer wood doors?

A: We do not offer wood doors. All of our doors are manufactured with quality galvalume metal due to its superiority in rust and corrosion prevention. We also powder coat your products, giving them a durable layer of paint protection that will last for years longer than wood.

Q: What are your custom options?

A: If you don't see the size door that suits your needs, give us a call and we can work with you to make a door that is right for you.

Q: What is your lead time?

A: This will vary depending on a number of things but a standard order will be around 4-6 weeks on average.



P: 434.933.5176

E: Sales@stallworksllc.com

www.stallworks.com